

Location
UK

Client
City of Westminster

Budget
Confidential

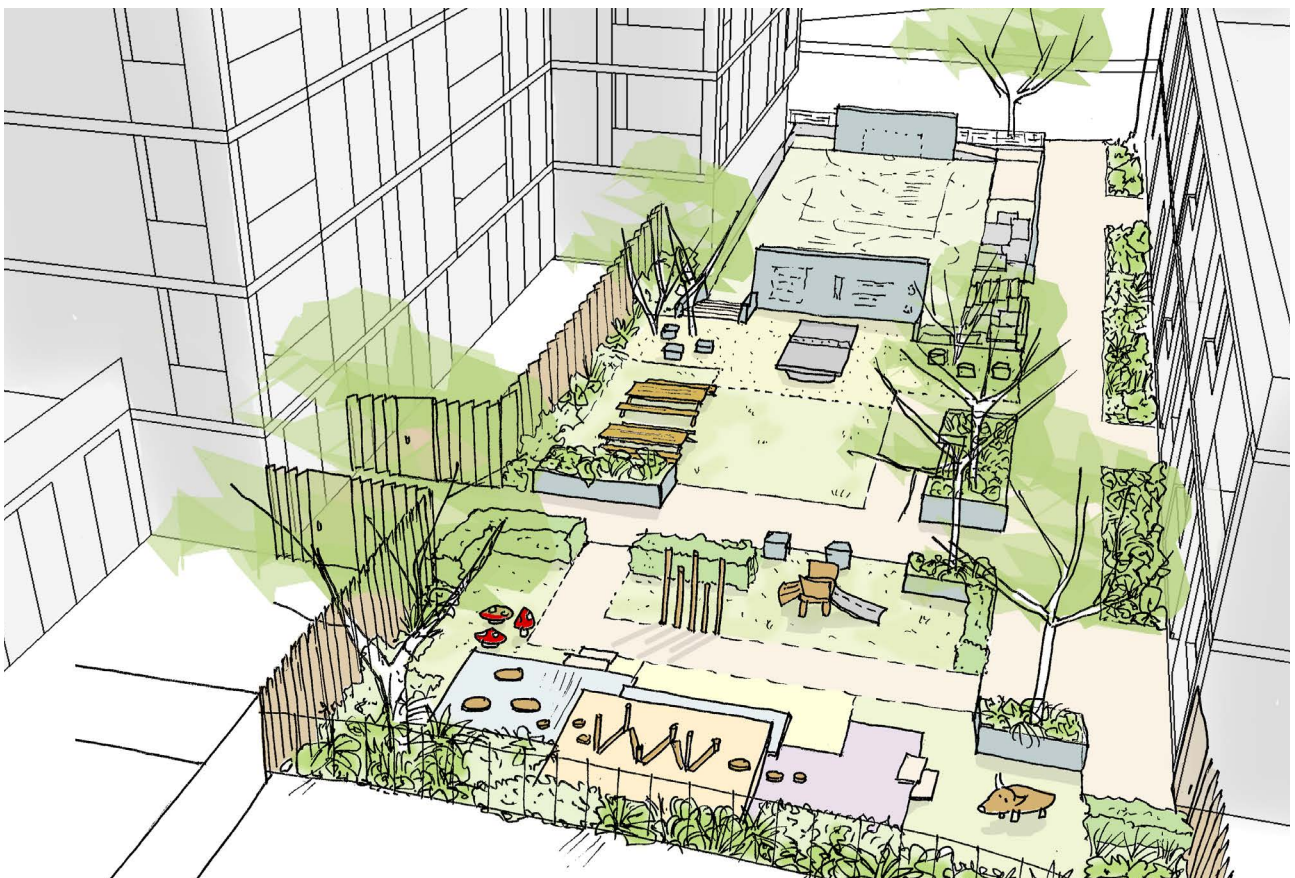
Period
2013 - Ongoing

Services
Concept Landscape Design
Stakeholder Consultation
Detailed Landscape Design

Website
www.cbastudios.com

291 Harrow Road

This project is about the redevelopment of the 291 Harrow Road, 1-2 Elmfield Way and N3 Carlton Gate sites in the north-western portion of the City of Westminster. The redevelopment will comprise a mix of housing accommodation for people with an Autistic Spectrum Disorder & Learning and Physical Disability, affordable housing and a component of non-residential development. The key focus for landscape design has been the design of an communal landscape area that essentially binds the numerous developments together at the core. Within this green space is provision for a ball games area, play area and a general amenity space. The project also looks at the enhancement of the surrounding public realm to support the integration of the new scheme into the existing urban fabric along with improved street scapes in immediate proximity to the development. Another key aspect is the design of courtyard gardens for the special needs housing and the design of roof-top gardens.



0245